

PARTS CATALOG

PowerShot SD4500 IS DIGITAL ELPH
IXUS 1000 HS
IXY 50 S



適応

本パーツカタログは、キヤノンデジタルカメラ製品のアフターサービスを行なう技術者に対して、製品の修理に必要な技術情報を提供することを目的としてキヤノン株式会社が発行するものです。

改訂

本パーツカタログは、製品の改良等のための変更、本パーツカタログの改善等の理由により、予告なく改訂される場合があります。

また、本パーツカタログの改訂に代えて、サービスインフォメーションを発行する場合があります。

商標

商標「Canon」、キヤノン製品の名称、サービス名等は、キヤノン株式会社の商標または登録商標です。
(キヤノングループ各社の商標、登録商標の場合もあります。)

Adobe、Adobeロゴ、Acrobat、AcrobatロゴおよびReaderは、Adobe Systems Incorporated (アドビシステムズ社) の米国ならびに他の国における商標または登録商標です。

本パーツカタログ中に記載されているその他の製品等の名称は、一般に各社の商標または登録商標です。

著作権

本パーツカタログの著作権は、キヤノン株式会社が保有しています。

事前にキヤノン株式会社の書面による許可を得ることなく、本パーツカタログの全部または一部を複製、転載、他の言語への翻訳等することを禁止します。

Copyright © 2010 by Canon Inc.

キヤノン株式会社
イメージコミュニケーション事業本部
イメージコミュニケーション品質保証センター
イメージコミュニケーション第二品質保証部
DCサービス・品質保証課
〒146-8501 東京都大田区下丸子3-30-2

TERMS AND CONDITIONS OF USE

This Parts Catalog has been issued by Canon Inc. for the purpose of providing necessary technical information for qualified persons engaging in repair service of respective Canon digital camera products.

Revisions:

Information in this Parts Catalog is subject to change without notice due to any changes or modifications (e.g., due to modifications to the current product, improvement on description of this Parts Catalog). In case of any necessity to change, modify or otherwise revise this Parts Catalog, Canon Inc. shall be entitled to revise this Parts Catalog by furnishing the revised version thereof or by issuing the service information as substitute for such revision.

Trademarks:

Canon Inc.'s trademark, logos, product names, service marks and those trademark, logos, product names, service marks licensed to Canon Inc. by any of its affiliate or subsidiary are registered or unregistered marks of Canon Inc. or such affiliate or subsidiary in Japan and/or other countries. Adobe, the Adobe logo, Acrobat, the Acrobat logo and Reader are either registered trademarks or trademarks of Adobe Systems Incorporated in the United States of America and/or other countries. All other trademarks, product names, service marks are generally either registered or unregistered marks of their respective owners.

Copyright:

All copyrights in the content of this Parts Catalog are owned or controlled by Canon Inc. You are not permitted to copy, reproduce, download, modify, adapt or translate in any way the content of this Parts Catalog for any purpose other than the purpose contemplated herein without prior written consent of Canon Inc.

Copyright © 2010 by Canon Inc.

Canon Inc.
Image Communication Products Operations
Image Communication Products Quality Assurance Center
Image Communication Products Quality Assurance Div.2
Digital Imaging Products Service & Quality Assurance Dept.
30-2, Shimomaruko 3-chome, Ohta-ku, Tokyo 146-8501, Japan

CONTENTS

PowerShot SD4500 IS/IXY 50S/IXUS 1000 HS

Casing Parts-1 (Casings)-----	Pg1
Casing Parts-2 (Screws)-----	Pg2
Internal Parts-----	Pg3
Optical Ass'y-----	Pg4
Electrical Parts-----	Pg5
Accessories-----	Pg6
Service Tools-1-----	Pg7
Service Tools-2-----	Pg8

CLASS 凡例

- A: 使用頻度高
- B: 使用頻度中
- C: 使用頻度低
- D: 安全規格部品
- E: 消耗部品
- F: 標準ネジ、ワッシャー
- S: 供給制限品
- Y: サービス工具

Category of CLASS

- A: Frequency of use: High
- B: Frequency of use: Middle
- C: Frequency of use: Low
- D: Safety-related critical parts
- E: Consumable parts
- F: Standard screws and washers
- S: Supply of the parts is limited
- Y: Service Tools

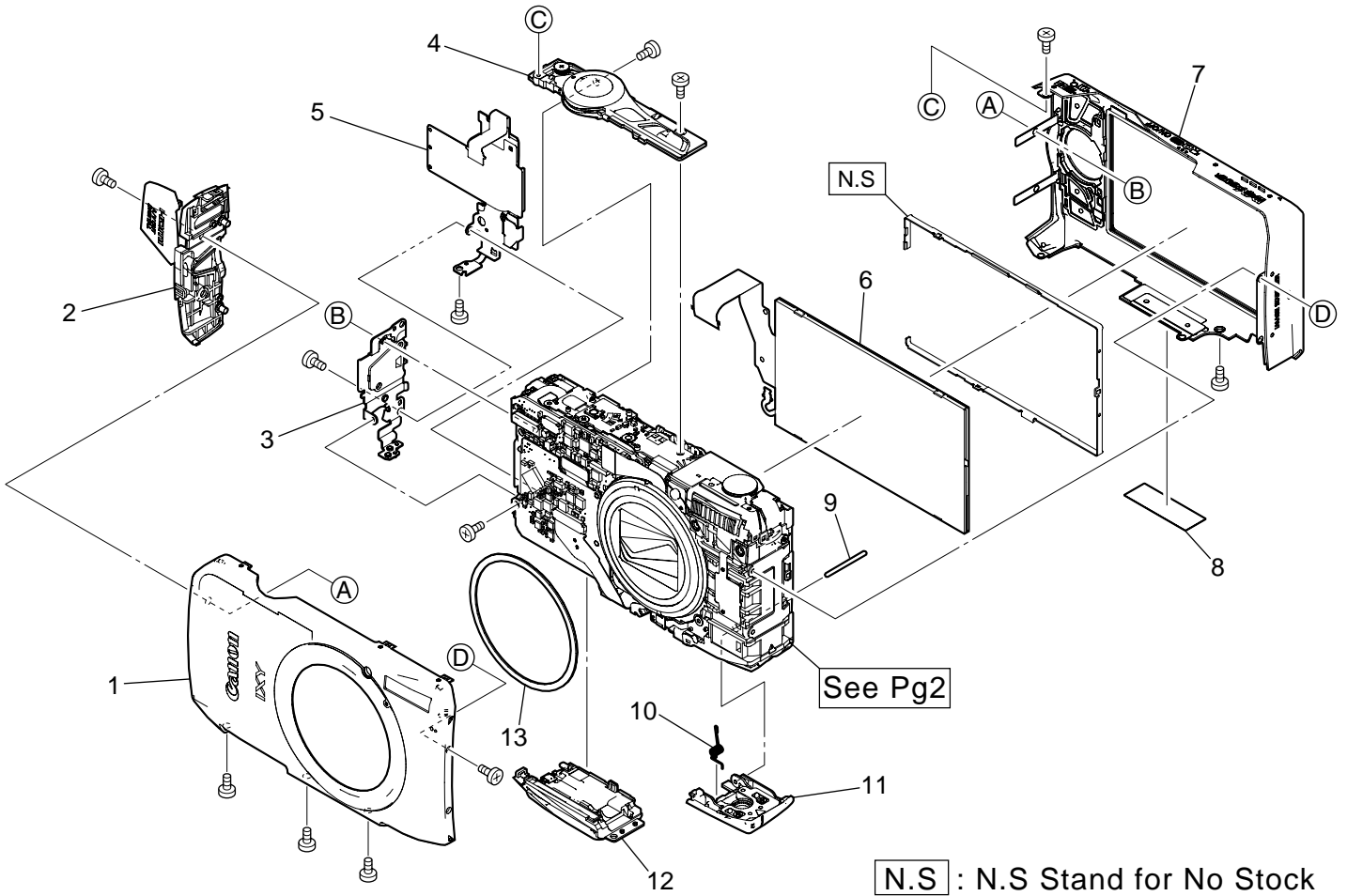
Parts Color Name

RED: Red	ORA: Orange	WHT: White	GRA: Gray
BLU: Blue	BRW: Brown	BLK: Black	
GRE: Green	PIK: Pink	GLD: Gold	
YEL: Yellow	PUP: Purple	SIL: Silver	

CAUTION

△がついている部品は安全上重要な部品です。交換時は、必ず指定の部品を使用して下さい。
Especially critical parts in the power circuit block should not be replaced with other marks.
Critical parts are marked with △ in this parts list.

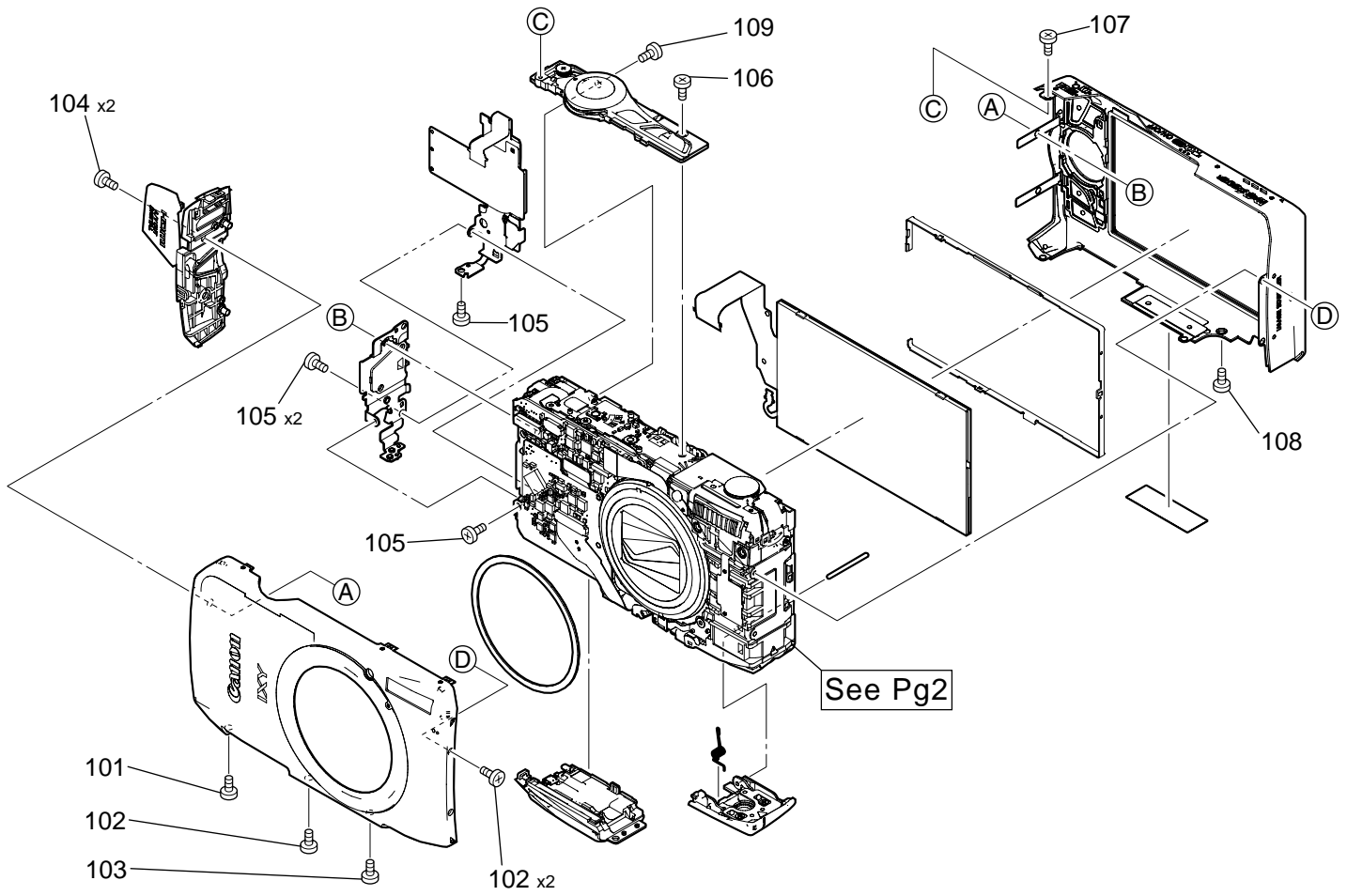
Casing Parts-1 (Casings)



PARTS LIST

NEW	SYMBOL	PARTS NO.	CLASS	QTY	DESCRIPTION	REMARKS
*	1	CM1-6622-000	B	1	COVER ASS'Y, FRONT, SIL, IXY	
*		CM1-6631-000	B	1	COVER ASS'Y, FRONT, SIL, ELPH	
*		CM1-6634-000	B	1	COVER ASS'Y, FRONT, SIL, IXUS	
*		CM1-6639-000	B	1	COVER ASS'Y, FRONT, BRW, IXY	
*		CM1-6644-000	B	1	COVER ASS'Y, FRONT, BRW, ELPH	
*		CM1-6647-000	B	1	COVER ASS'Y, FRONT, BRW, IXUS	
*		CM1-6652-000	B	1	COVER ASS'Y, FRONT, PIK, IXY	
*		CM1-6660-000	B	1	COVER ASS'Y, FRONT, PIK, IXUS	
*	2	CM1-6700-000	B	1	COVER ASS'Y, SIDE, SIL	
*		CM1-6701-000	B	1	COVER ASS'Y, SIDE, BRW	
*		CM1-6702-000	B	1	COVER ASS'Y, SIDE, PIK	
*	3	CM1-6624-000	B	1	PLATE ASS'Y, STRAP	
*	4	CM1-6623-000	B	1	COVER ASS'Y, TOP, SIL	
*		CM1-6643-000	B	1	COVER ASS'Y, TOP, BRW	
*		CM1-6656-000	B	1	COVER ASS'Y, TOP, PIK	
*	5	CM1-6315-000	B	1	JOG DIAL ASS'Y, SIL	
*		CM1-6642-000	B	1	JOG DIAL ASS'Y, BRW	
*		CM1-6655-000	B	1	JOG DIAL ASS'Y, PIK	
*	6	CM1-6663-000	B	1	LCD ASS'Y	
*	7	CM1-6595-000	B	1	COVER ASS'Y, REAR, SIL, IXY	
*		CM1-6633-000	B	1	COVER ASS'Y, REAR, SIL, ELPH	
*		CM1-6636-000	B	1	COVER ASS'Y, REAR, SIL, IXUS	
*		CM1-6641-000	B	1	COVER ASS'Y, REAR, BRW, IXY	
*		CM1-6646-000	B	1	COVER ASS'Y, REAR, BRW, ELPH	
*		CM1-6649-000	B	1	COVER ASS'Y, REAR, BRW, IXUS	
*		CM1-6654-000	B	1	COVER ASS'Y, REAR, PIK, IXY	
*		CM1-6662-000	B	1	COVER ASS'Y, REAR, PIK, IXUS	
*	8	CY1-9033-000	B	1	PLATE, BODY NUMBER, SIL	
*		CY1-9034-000	B	1	PLATE, BODY NUMBER, BRW	
*		CY1-9035-000	B	1	PLATE, BODY NUMBER, PIK	
*	9	CD4-5581-000	C	1	SHAFT, BATTERY COVER	
*	10	CD4-5582-000	C	1	SPRING, BATTERY COVER	
*	11	CM1-6621-000	B	1	COVER ASS'Y, SD, SIL	
*		CM1-6638-000	B	1	COVER ASS'Y, SD, BRW	
*		CM1-6651-000	B	1	COVER ASS'Y, SD, PIK	
*	12	CM1-6620-000	B	1	COVER ASS'Y, BATTERY, SIL	
*		CM1-6637-000	B	1	COVER ASS'Y, BATTERY, BRW	
*		CM1-6650-000	B	1	COVER ASS'Y, BATTERY, PIK	
*	13	CD4-5492-000	C	1	SHEET, DUST PREVENTION	

Casing Parts-2 (Screws)



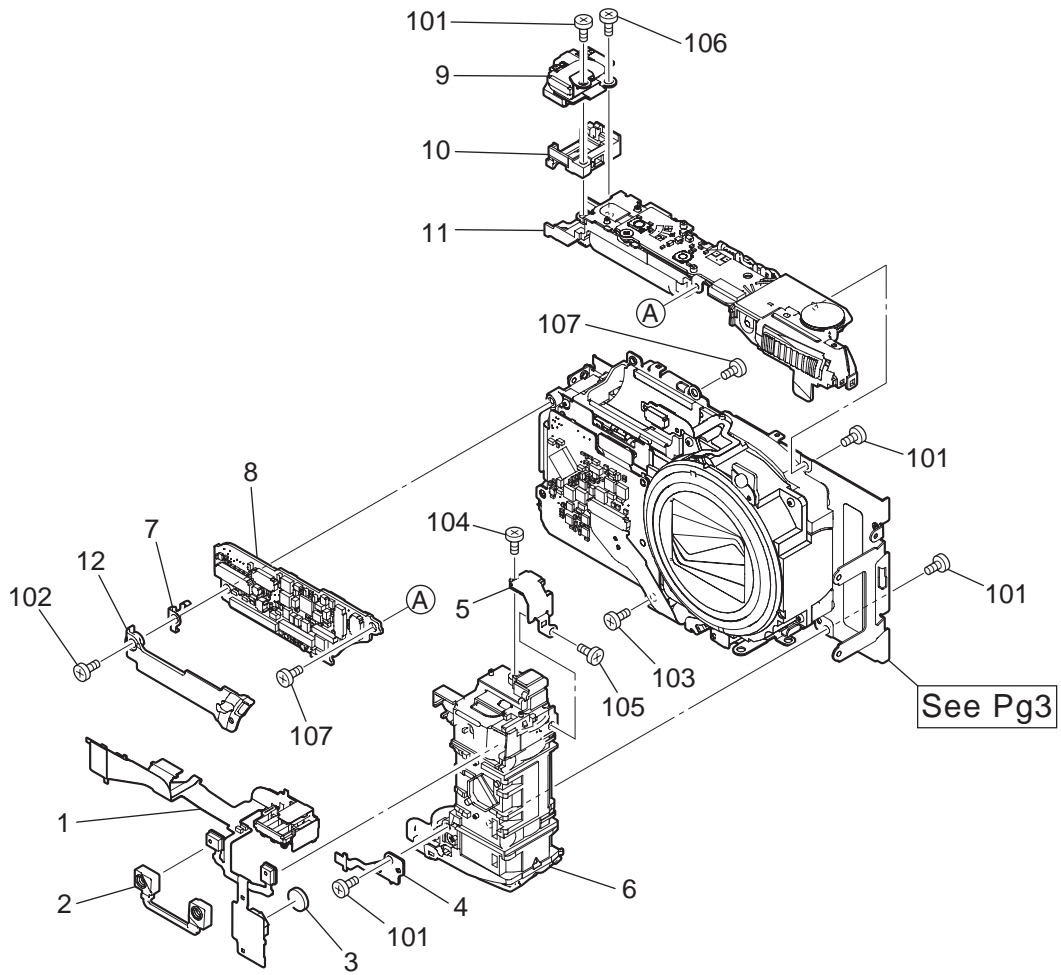
PARTS LIST

PowerShot SD4500 IS
IXY 50S
IXUS 1000 HS

Pg2

NEW	SYMBOL	PARTS NO.	CLASS	QTY	DESCRIPTION	REMARKS
*	101	CD4-6495-000	C	1	SCREW	SIL
*		CD4-6498-000	C	1	SCREW	BRW
*		CD4-6501-000	C	1	SCREW	PIK
*	102	CD4-6508-000	C	3	SCREW	SIL
*		CD4-6512-000	C	3	SCREW	BRW
*		CD4-6516-000	C	3	SCREW	PIK
*	103	CD4-6510-000	C	1	SCREW	SIL
*		CD4-6514-000	C	1	SCREW	BRW
*		CD4-6518-000	C	1	SCREW	PIK
*	104	CD4-6509-000	C	2	SCREW	SIL
*		CD4-6513-000	C	2	SCREW	BRW
*		CD4-6517-000	C	2	SCREW	PIK
	105	CD4-3996-000	C	4	SCREW	
*	106	CD3-1748-000	C	1	SCREW	
	107	XA4-5140-207	F	1	SCREW	
*	108	CD4-6511-000	C	1	SCREW	SIL
*		CD4-6515-000	C	1	SCREW	BRW
*		CD4-6519-000	C	1	SCREW	PIK
	109	CD3-3325-000	C	1	SCREW	

Internal Parts



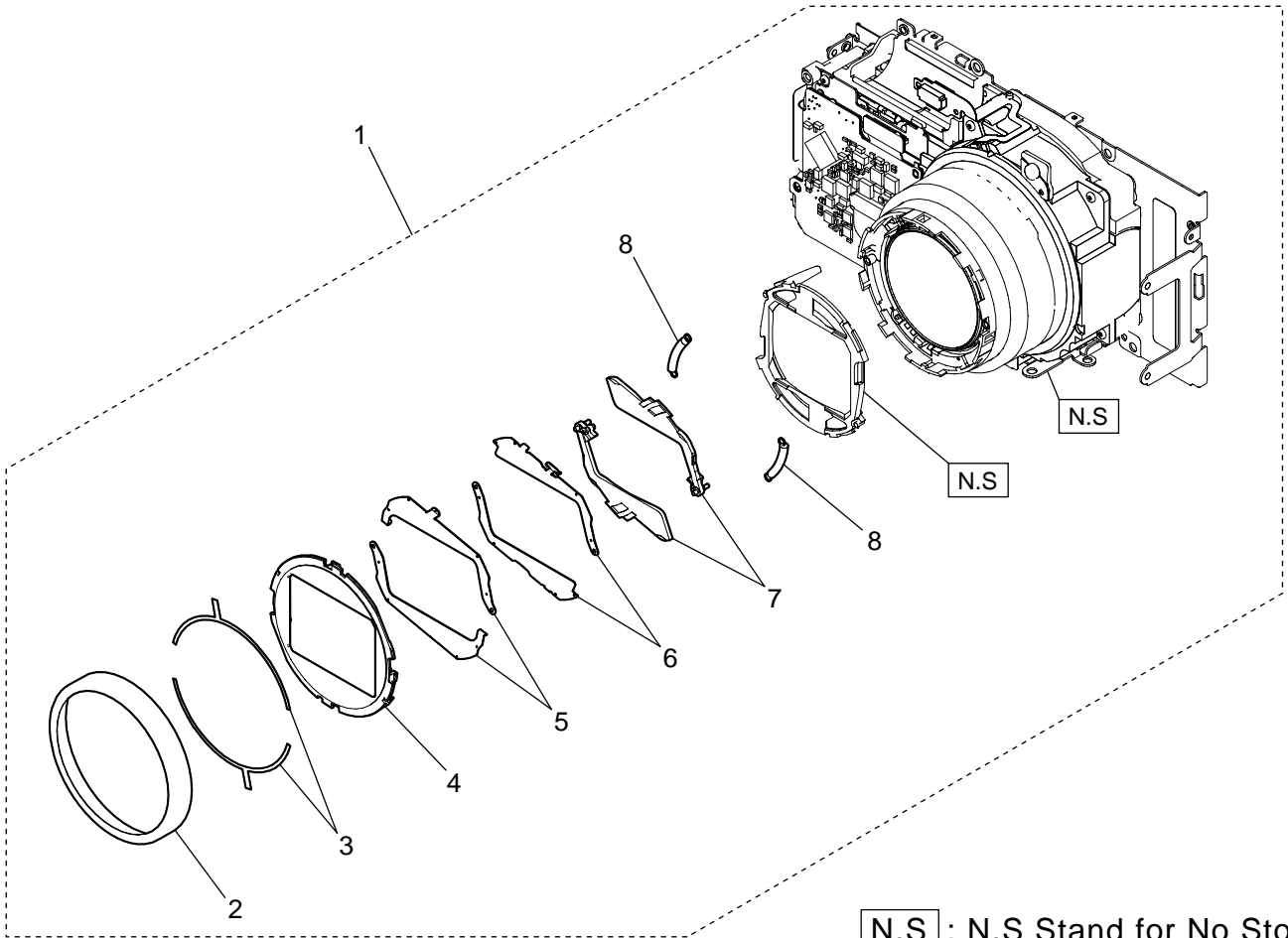
PARTS LIST

PowerShot SD4500 IS
IXY 50S
IXUS 1000 HS

Pg3

NEW	SYMBOL	PARTS NO.	CLASS	QTY	DESCRIPTION	REMARKS
*	1	CM1-6573-000	C	1	FPC ASSY,BATT/GYRO/MIC	
*	2	CM1-6670-000	B	1	MICROPHONE BUSH ASS'Y	
	3	WK1-5174-000	C	1	BATTERY, LITHIUM METAL <2ND>	
*	4	CM1-6673-000	C	1	SWITCH ASS'Y	
*	5	CD4-5576-000	C	1	PLATE, GYRO	
*	6	CM1-6619-000	C	1	BATTERY BOX ASS'Y	
*	7	CD4-6950-000	C	1	PLATE, GND JACK	
*	8	CM1-6568-000	B	1	PCB ASS'Y, MAIN	
*	9	CM1-6572-000	C	1	FPC ASS'Y, JACK	
*	10	CD4-5575-000	C	1	HOLDER, JACK	
*	11	CM1-6439-000	B	1	FLASH ASS'Y	
*	12	CD4-7674-000	C	1	HOLDER, CONNECTOR	
	101	XA4-5170-307	F	4	SCREW	
*	102	XA4-5170-507	F	1	SCREW	
	103	CD4-3996-000	C	1	SCREW	
	104	XA4-5140-207	F	1	SCREW	
	105	CD4-6520-000	C	1	SCREW	
	106	XA1-7170-207	F	1	SCREW	
	107	CD4-7533-000	C	2	SCREW	

Optical Ass'y



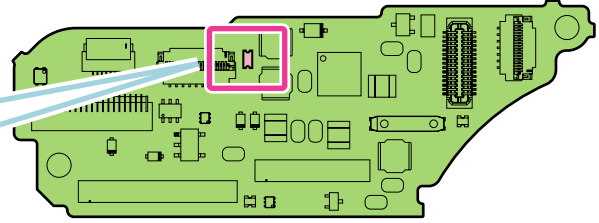
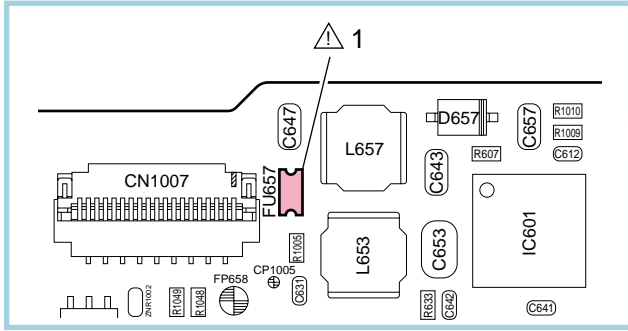
PARTS LIST

PowerShot SD4500 IS
IXY 50S
IXUS 1000 HS

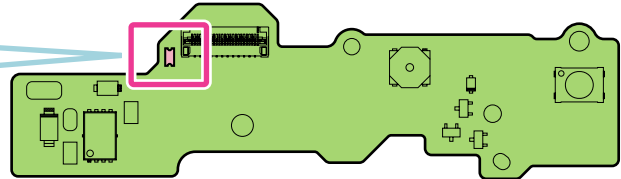
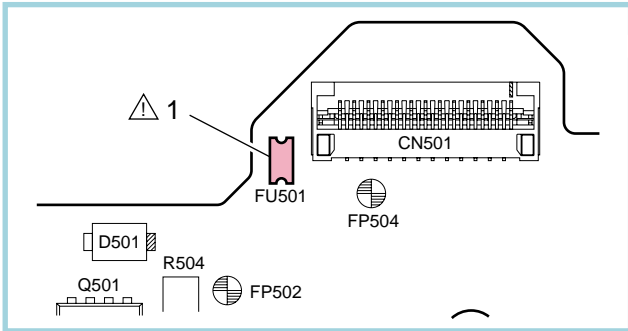
Pg4

NEW	SYMBOL	PARTS NO.	CLASS	QTY	DESCRIPTION	REMARKS
*	1	CY1-9032-000	B	1	OPTICAL ASS'Y	
*	2	CD4-5413-000	B	1	CAP, FRONT	
*	3	CD4-5412-000	C	2	TAPE, FRONT CAP	
*	4	CD4-5411-000	B	1	COVER, BARRIER	
*	5	CD4-5410-000	B	2	PLATE, BARRIER 3	
*	6	CD4-5409-000	B	2	PLATE, BARRIER 2	
*	7	CD4-5408-000	B	2	PLATE, BARRIER 1	
*	8	CD4-5407-000	C	2	SPRING, BARRIER	

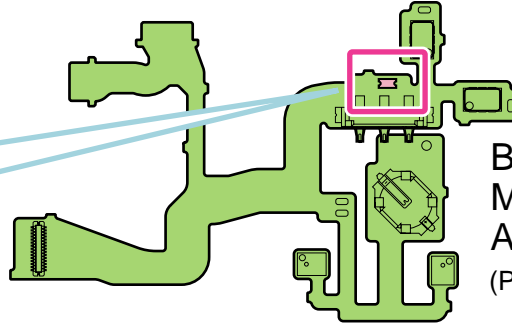
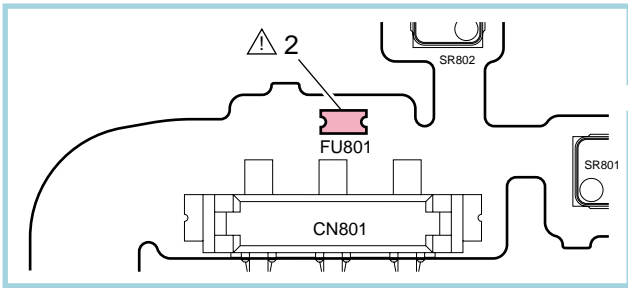
Electrical Parts



MAIN PCB ASS'Y
(PRIMARY SIDE)



FLASH/TOP PCB ASS'Y
(PRIMARY SIDE)



**BATT/GYRO/
MIC FPC
ASS'Y**
(PRIMARY SIDE)

PARTS LIST

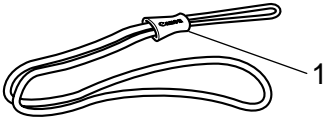
PowerShot SD4500 IS
IXY 50S
IXUS 1000 HS

Pg5

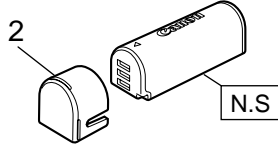
NEW	SYMBOL	PARTS NO.	CLASS	QTY	DESCRIPTION	REMARKS
	△1	VD7-2241-251	D	2	FUSE	FU501, FU657
	△2	VD7-2242-501	D	1	FUSE, LITTEL 049402.5	FU801

Accessories

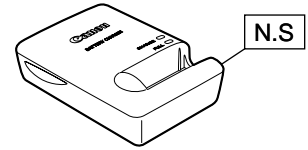
Wrist Strap WS-DC7



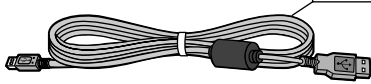
Battery Pack NB-9L



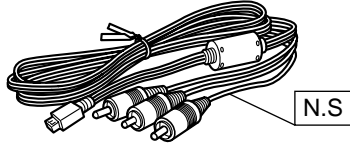
Battery Charger
CB-2LB/CB-2LBE/CB-2LBC



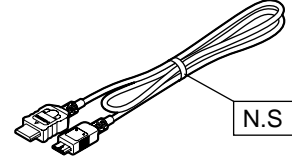
USB Interface Cable
IFC-400PCU



AV Cable AVC-DC400ST



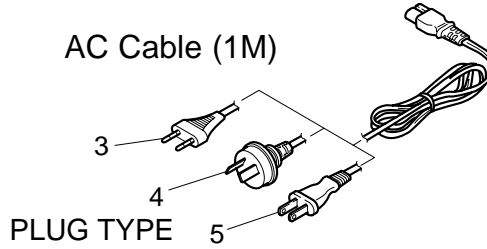
HDMI Cable HTC-100



Canon Digital Camera
Solution Disk

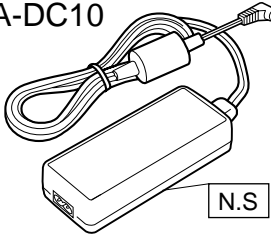


AC Cable (1M)

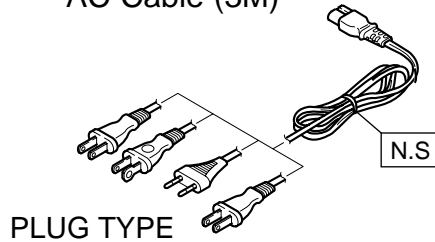


AC Adapter Kit ACK-DC70

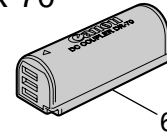
Compact Power Adapter
CA-DC10



AC Cable (3M)



DC Coupler
DR-70



N.S : N.S Stand for No Stock

PARTS LIST

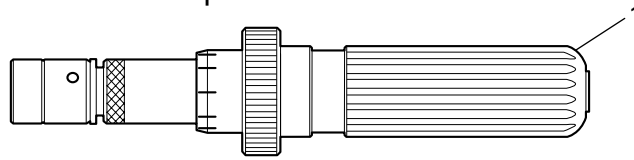
PowerShot SD4500 IS
IXY 50S
IXUS 1000 HS

Pg6

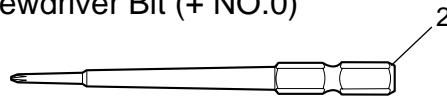
NEW	SYMBOL	PARTS NO.	CLASS	QTY	DESCRIPTION	REMARKS
	1	C84-1554-000	B	1	STRAP, WRIST WS-DC7	
*	2	CY1-9036-000	C	1	COVER, TERMINAL NB-9L	
	3	C86-1092-000	C	1	CABLE, AC, EUROPE (1M)	
	4	C86-1093-000	C	1	CABLE, AC, AUSTRALIA (1M)	
	5	C86-1095-000	C	1	CABLE, AC, CHINA (1M)	
*	6	C84-1772-000	C	1	COUPLER, DC DR-70	

Service Tools-1

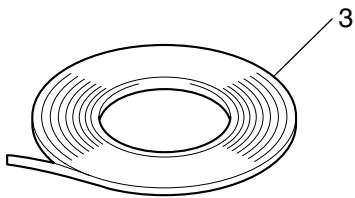
Torque Screwdriver



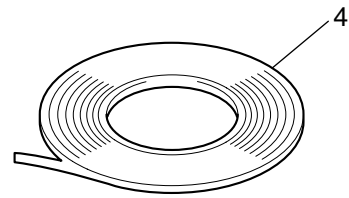
Screwdriver Bit (+ NO.0)



Adhesive Tape SONY T4000
(Double-side Tape)



Adhesive Tape 3M NO.56
(Electric Insulation Tape)



PARTS LIST

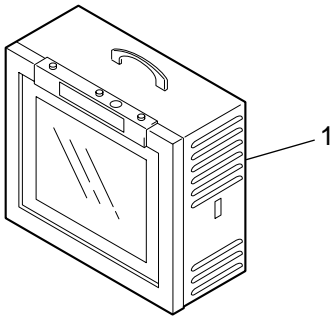
PowerShot SD4500 IS
IXY 50S
IXUS 1000 HS

Pg7

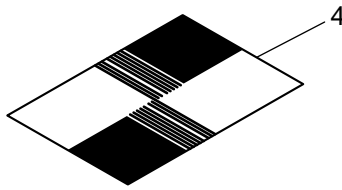
NEW	SYMBOL	PARTS NO.	CLASS	QTY	DESCRIPTION	REMARKS
	1	CY9-1607-000	Y	1	SCREWDRIVER, TORQUE	
	2	CY9-1608-000	Y	1	BIT, SCREWDRIVER, + NO.0	A SET OF TWO BITS
	3	CY4-6012-000	Y	1	ADHESIVE TAPE, SONY T4000	0.15mm x 6mm x 50m roll
	4	CY4-6018-000	Y	1	ADHESIVE TAPE, 3M NO. 56	0.06mm x 15mm x 66m roll

Service Tools-2

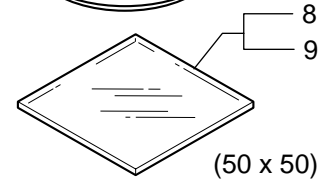
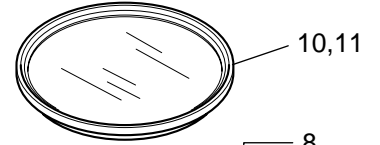
Color Viewer (5500°K)



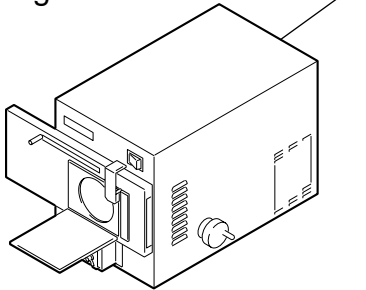
Infinity AF Chart (1)



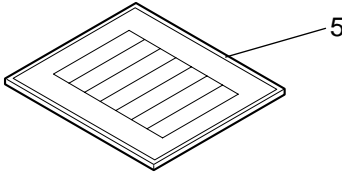
- C-12 Filter ——— 8
- W-10 Filter ——— 9
- FL-W Filter ——— 10
- ND-4 Filter ——— 11



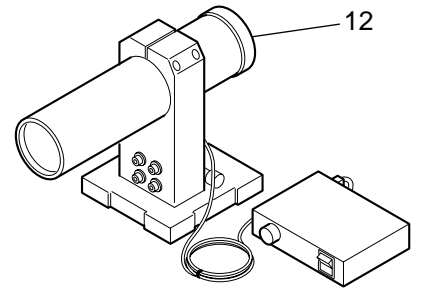
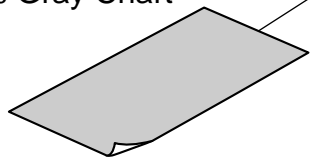
Brightness Box



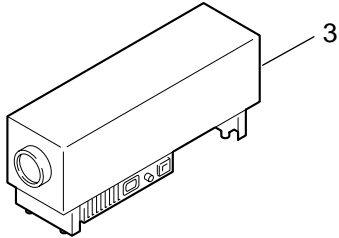
Standard Color Bar Chart



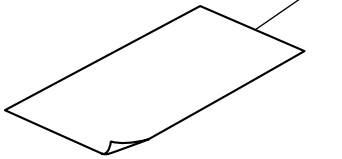
18% Gray Chart



Infinity Collimator



ZOOM / AF Chart



IS Auto Adjustment Collimator

N.S : N.S Stand for No Stock

PARTS LIST

PowerShot SD4500 IS
IXY 50S
IXUS 1000 HS

Pg8

NEW	SYMBOL	PARTS NO.	CLASS	QTY	DESCRIPTION	REMARKS
	1	CY9-1562-100	Y	1	COLOR VIEWER 5500K	FOR 100~120V AC
		CY9-1562-200	Y	1	COLOR VIEWER 5500K	FOR 200~240V AC
	2	CY9-1566-100	Y	1	BRIGHTNESS BOX	FOR 100~120V AC
		CY9-1566-200	Y	1	BRIGHTNESS BOX	FOR 200~240V AC
	3	CY9-1569-100	Y	1	COLLIMATOR, INFINITY	FOR 100~120V AC
		CY9-1569-200	Y	1	COLLIMATOR, INFINITY	FOR 200~240V AC
	4	CY9-1601-000	Y	1	CHART, AF, INFINITY	
	5	DY9-2002-000	Y	1	COLOR BAR CHART	
	6	CY9-1563-000	Y	1	CHART, 18% GRAY	
	7	CY9-1620-000	Y	1	CHART, ZOOM/AF	
	8	CY9-1604-000	Y	1	FILTER, OPTICAL, C-12 (50 x 50)	
	9	CY9-1603-000	Y	2	FILTER, OPTICAL, W-10 (50 x 50)	
	10	CY9-1557-000	Y	1	FILTER, FL-W (58MM)	
	11	CY9-1553-000	Y	1	FILTER, ND-4 (58MM)	
	12	CY9-1600-000	Y	1	COLLIMATOR, ISAUTOADJUSTMENT	FOR 100~240V AC